

70mm

70mm

70mm

70mm

70mm

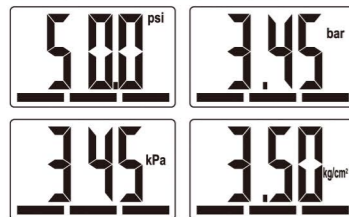
70mm

Combo Digital Tread Depth and Tire Pressure Gauge Instructions

Remove battery tab before 1st use. Pull tab to remove, gauge is now ready for use.

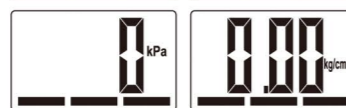
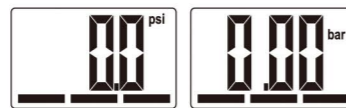
Direct Pressure Measurement Mode:

1. Push nozzle of gauge on to tire valve to power gauge ON.
2. Hold gauge on valve stem, the display will first flash "000", then actual pressure reading is displayed and locked.



3. Promptly remove gauge from valve stem.
4. The pressure reading will show (stay) on the LCD for about 10 seconds.
5. To convert the measure unit with the pressure reading on LCD, push the "ON" for 2 seconds.
6. Then gauge will reset to 0.0; 0.00 or 0

1



7. Gauge will turn off after 10 sec interval from gauge displays 0.0; 0.00 or 0.
8. If the pressure reading is higher than expected, user can press and hold bleed button to release air. Release bleed button to get the actual pressure in tire from LCD.

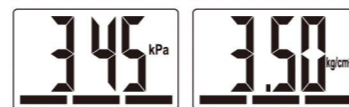
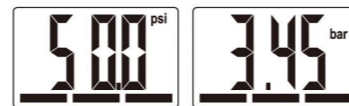
Indirect Pressure Measurement Mode:

1. Press the "ON" button to wake up the tire gauge. The display will first flash a full screen 8.8/8.8



2

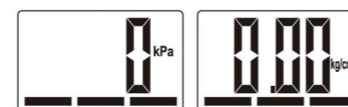
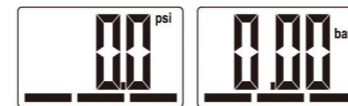
2. LCD will show "0.0; 0.00 or 0" with last measurement mode and unit icon.
3. If last measurement mode is tread depth mode, press "ON" button again to enter pressure mode.
4. Press and hold the ON button 2 seconds to change units, the unit icon will blink (to change units psi/bar/kpa/Kg/cm² sequentially). If no further action is taken within 3 sec, the units icon will stop blinking and this will mean that gauge have acknowledged selection and confirmed it.
5. Push and Hold nozzle of gauge onto valve stem, the pressure reading is displayed in following manner:



6. Promptly remove gauge from valve stem.

3

7. The pressure reading will show (stay) on the LCD for about 10 seconds.
8. Then gauge will reset to zero and it will display zero in following manner depend on units:



9. Gauge will turn off in 10 sec after gauge displays 0.0; 0.00 or 0.

Tread Depth Measurement Mode:

1. Press the ON button to wake up the tire gage, the display will first flash a full screen 8.8/8.8
2. The LCD will show "0.0; 0.00 or 0" with last measure mode unit icons.
3. If last measure mode is pressure mode, press "ON" button again to enter tread depth mode.

4

4. Press and Hold the ON button 2 seconds to change depth measure units, the unit icon will blink (press ON button again to change units INCH/MM sequentially). If no further action is taken within 3 sec, the units icon will stop blinking and this will mean that gauge have acknowledged selection and confirmed it (if needed later on press ON again to measure tire pressure).
5. Slide the button on the side till the metal pin touches the bottom of the groove. Push the gauge down towards the tire until the flat surface of the gauge on the tread surface, and then the tire depth reading is displayed.



6. Tire Depth Specification:
 - a) Depth < 4/32 inch or 3.2mm, the color bar is Red
 - b) 4/32 inch or 3.2mm ≤ Depth < 5/32 inch or 4.0mm, the color bar is Yellow
 - c) Depth ≥ 5/32 inch or 4.0mm, the color bar is Green
7. Remove the gauge from the tire; the gauge LCD display reading will decrease if the user push the slider indicates up towards to the top.

5

8. Gauge will automatically turn off in 10 seconds, once the tire depth reading stable on the LCD.

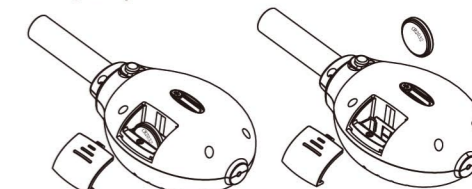
Check your tire gauge once a week, the battery life is about 3 year based on 4 operations per day and 60 seconds each time.

Battery replacement:

1. When gauge battery is low, the gauge display will show "Lo".



2. Remove the battery cover.
3. Remove the button battery.
4. Replace with a new battery, noting the proper orientation or polarity.



6



This device complies with Part15 of the FCC Rules. Operation is subject to the following two conditions:
(1) this device may not cause harmful interference, and
(2) this device must accept any interference received, including interference that may cause undesired operation.

Our authorized service center address:
11751 Rock Landing Drive Suite H-7
Newport News, Virginia 23606 U.S.A.
Attn: Customer Service
Made in China



Measurement Ltd., Inc.
www.measurement-ltd.com
Printed in China

7

Over Range:

When tire gauge reading more than 103psi / 7.10bar / 710kpa / 7.25Kg/cm² or 15.5mm / 20/32inch, the display will shows "Err"

**Advice:**

- Always follow the Tire manufacturers' pressure ratings which are based on "cool" Tire temperatures
- Use a soft damp cloth to clean your gauge. Do not use any liquids or cleansers
- Use a Tire gauge every four weeks and top up with a Tire inflator to reduce fuel consumption, increase Tire life and reduce CO₂ emissions

Zero Set:

It is advisable to check the zero set of the gauge from time to time. To check the zero set of the gauge

1. Briefly press the gauge onto the valve stem (It is not necessary for a good seal to be made as only a small amount of air must enter the gauge to zero set the unit)

8

2. When the display shows "0.0" promptly remove the gauge from the valve stem. The gauge has now been recalibrated and is ready for use

Troubleshooting:

If the display is blank:

Make sure that the pressure seal between the Tire gauge and the valve stem is free from leaks

The unit has an unusually high or low reading:

Check to make sure that there are no leaks in the system. Re-zero the unit by taking a reading and allowing the unit to automatically shut off. Then check the air pressure in the Tire

If the display reads "Lo":

The battery is depleted so must be replaced

Specifications:

- Tire pressure range: 5~99 psi / 0.35~6.80 bar / 35~680 kPa / 0.4~7.00 kg/cm²
- Tire pressure resolution: 0.5 psi / 0.05 bar / 5 kPa / 0.05 kg/cm²
- Accuracy: +/-1% + 1 LSD

- Tread depth range: 0-19/32 inch / 0-15 mm
- Tread depth resolution: 1/32 inch / 0.1 mm
- Accuracy: 1/32 inch / +/-0.2 mm

Information on Waste Disposal for Consumers of Electrical & Electronic Equipment

This mark on a product and/or accompanying documents indicates that when it is to be disposed of, it must be treated as Waste Electrical & Electronic Equipment (WEEE). Any WEEE marked waste products must not be mixed with general household waste, but kept separate for treatment, recovery and recycling of the materials used. For proper treatment, recovery and recycling; please take all WEEE marked waste to your Local Authority Civic waste site, where it will be accepted free of charge. If all consumers dispose of Waste Electrical & Electronic Equipment correctly, they will be helping to save valuable resources and preventing any potential negative effects upon human health and the environment, of any hazardous materials that the waste may contain.



9

Please Recycle Your Spent Batteries

Batteries should not be disposed of in unsorted municipal waste, but separately collected to facilitate the correct treatment and recycling of the substances they contain. The recycling of batteries ensures the recovery of these valuable materials and prevents any potentially harmful effects upon both the environment and human health. Please contribute to battery recycling by segregating all spent batteries and actively participating in their collection and recycling. Various battery collection schemes will be in operation in different areas of the country. However, battery collection bins will be available at retail stores that sell batteries as well as at schools, libraries and other public buildings.

Warranty and Service

Measurement Ltd., Inc warrants this product against defects in material or workmanship for a period of five (5) years from the date of purchase and agrees to replace it free of charge. This warranty does not cover damage resulting from misuse or abuse of the product. Should your product require service, you may send it back to Measurement Ltd., Inc for repair or replacement.

Patent Pending

10

ACCUTIRE®

COMBO DIGITAL TREAD DEPTH & TIRE PRESSURE GAUGE

User Manual



MODEL MS-4802