



## PARK-ZONE®

This equipment has been tested and found to comply with the limits for a Class B digital device, pursuant to Part 15 of the FCC Rules. These limits are designed to provide reasonable protection against harmful interference in a residential installation. This equipment generates uses and can radiate radio frequency energy and, if not installed and used in accordance with the instructions, may cause harmful interference to radio communications. However, there is no guarantee that interference will not occur in a particular installation. If this equipment does cause harmful interference to radio or television reception which can be determined by turning the equipment off and on, the user is encouraged to try to correct the interference by one or more of the following measures:

- Reorient or relocate the receiving antenna.
- Increase the separation between the equipment and receiver.
- Connect the equipment into an outlet on a circuit different from that to which the receiver is connected.
- Consult the dealer or an experienced radio/TV technician for help.

Caution: Any changes or modifications not expressly approved by Measurement Ltd., Inc, the manufacturer of this product and the party responsible for compliance could void the user's authority to operate the equipment.

Measurement LTD, Inc 11751 Rock Landing Drive, Suite H-7, Newport News, VA23606  
[www.measurement-ltd.com](http://www.measurement-ltd.com)



# PARK-ZONE®

WE BELIEVE THAT EXACTING STANDARDS ARE THE CORE OF OUR SUCCESS.

THE PARK-ZONE® HAS BEEN THOROUGHLY TESTED TO

BE CERTAIN IT MEETS OUR RIGOROUS QUALITY CONTROL CRITERIA.

With our PARK-ZONE® Electronic Parking Valet, you'll steer clear of the bumps, scrapes and anxiety associated with driving into your garage. just mount it to the wall in front of you and the ultrasonic sensors help guide you to the perfect spot. It's that simple—and it takes the guess-work out of parking your car.

THIS WARRANTY IS THE ONLY ONE WE GIVE ON PARK-ZONE. IT SETS FORTH ALL OUR RESPONSIBILITIES REGARDING YOUR PARK-ZONE PARKING AID. THERE ARE NO EXPRESS WARRANTIES EXCEPT THOSE LISTED ABOVE. MEASUREMENT LTD., INC. SHALL NOT BE LIABLE FOR INCIDENTAL OR CONSEQUENTIAL DAMAGES RESULTING FROM USE OF THE PRODUCT, OR ARISING OUT OF BREACH OF THIS WARRANTY, INCLUDING THE WARRANTIES OF MERCHANTABILITY (AN UNWRITTEN WARRANTY THAT THE PRODUCT IS FIT FOR ORDINARY USE), AND FITNESS FOR PARTICULAR PURPOSE ARE LIMITED TO THE APPLICABLE WARRANTY PERIOD SET FORTH ABOVE.

## Measurement Ltd., Inc. Limited Warranty

Measurement Ltd., Inc. warrants this product to be free from defects in materials or workmanship for one year from the date of original purchase by the consumer. If any such defect is discovered and returned within one year of the date it was purchased, we will replace it free of charge.

### Measurement Ltd., Inc.

11751 Rock Landing Drive, Suite H-7, Newport News, VA 23606

This warranty does not cover defects resulting from abuse of unit, modification, alteration, repair or service of unit by anyone other than Measurement Ltd., Inc. mishandling, improper maintenance, commercial use of the unit, or damages which occur in shipment or attributed to acts of God.

## CAUTION

- TO REDUCE THE RISK OF ELECTRIC SHOCK, DO NOT REMOVE COVER. THERE ARE NO SERVICEABLE PARTS INSIDE.
- TO REDUCE THE RISK OF FIRE OR ELECTRIC SHOCK, DO NOT EXPOSE THIS UNIT TO RAIN OR MOISTURE.



The lightning flash with arrow-head symbol within an equilateral triangle is intended to alert the user to the presence of uninsulated "dangerous voltage" within the unit's enclosure that may be of sufficient magnitude to constitute a risk of electric shock.



The exclamation point within an equilateral triangle is intended to alert the user to the presence of important operating and maintenance (servicing) instructions in the literature accompanying the unit.

## IMPORTANT SAFETY INSTRUCTIONS

All the safety and operating instructions should be read, adhered to and followed before the unit is operated.

### DANGER

To reduce the risk of electric shock, burns, fire or injury:

1. Always unplug the unit from the electrical outlet immediately after using.
2. Do not use while bathing or in a shower.
3. Do not place or store unit where it can fall or be pulled into a tub or sink.
4. Do not place in or drop into water or other liquid.
5. Do not reach for unit that has fallen into water. Unplug it immediately.
6. Care should be taken so that objects do not fall and liquids are not spilled onto the unit.

## CARE AND MAINTENANCE

Wipe with a soft, damp cloth. Do not use abrasive cleaning agents.

## SPECIFICATIONS

Operating Voltage.....	3.6 ~ 6.2V
Operating Current.....	LED on 20mA, Idle mode 20µA
Operating Temperature.....	0°C - 60°C (32F - 140F)
Circuitry.....	100% Solid State (both units)
Controller.....	Microprocessor
Case Parts.....	ABS Plastic (both units)
Light Display Dimensions.....	6.15" x 3.15" x 1.08" (l x w x d)
Sensor.....	Ultrasonic Transducer
Sensor Dimension.....	4.92" x 3.14" x 1.38" (l x w x d)



#### Note:

- Ensure that the path between the vehicle and the unit is free of any obstructions, and that there is 3' feet of clear space to the left and right of the unit.
- To change your parking distance, press ON/OFF to clear the current setting, and repeat steps 1 and 6.
- When using this product with batteries, by checking your Park Zone once a week, the battery life is about 6 months before replacement may be required.

#### USING THE UNIT

When driving your auto into garage the green LED illuminates when you are 16' feet from the wall.

The yellow LED illuminates when you are 8' feet from the wall, indicating it is almost time to stop.

The red LED illuminates when you reach your preset parking distance (1'4" - 16' from the wall) and it is time to stop.

Note: If the red LED flashes, this is an indication that the batteries are weak and need to be replaced. Press ON/OFF to switch to the "OFF" position before changing the batteries.

## WARNING

1. Close supervision is necessary when this unit is used by or near children.
2. Use this unit only for its intended use as described in this manual.
3. Unplug this unit during lightning storms or when unused for long periods of time.
4. Never drop or insert an object into any opening in the unit.
5. Protect the power cord from being walked on or pinched, particularly at plug outlets, convenience receptacles and the point where it exits the unit.
6. Do not allow cord to touch hot surfaces. Wrap cord loosely around the unit when storing.
7. The unit should be situated away from direct sunlight or heat sources such as radiators, electric heaters, heat registers, stoves, or other units (including amplifiers) that produce heat. Avoid placing on top of stereo equipment that radiates heat.



8. Never block the air openings of the unit with materials such as clothing, plastic bags or papers, or place it on a soft surface such as a bed or couch, where the air openings may be blocked.
9. Do not overload electrical outlet. Use only the power source as indicated.
10. Do not carry this unit by cord or use cord as handle.
11. Never operate this unit if it has a damaged cord or plug, if it is not working properly, or if it has been dropped or damaged or dropped into water. If the unit's power supply cord or plug is damaged, do not attempt to fix it yourself.
12. To avoid the risk of electric shock, do not disassemble or attempt to repair the unit. Incorrect repair can cause risk of electric shock or injury to persons when unit is used.
13. Do not operate in the presence of explosive and/or flammable fumes.

### INSTALLING THE UNIT AND SETTING YOUR PARKING DISTANCE

1. Park your vehicle in the desired location in your garage.  
Note: The unit's sensory range is 1'4" - 16'. Leave at least 1'4" of space between your vehicle's bumper and the garage wall.
2. Using the included screws, mount the Light Display on the garage wall so that it is within the driver's field of vision. Place the Light Display's MOUNTING HOLES over the screws.
3. Using the included screws, mount the Sensor (with the CABLE JACK facing up) directly below the Light Display. Place the Sensor's MOUNTING HOLES over the screws.  
Note: Mount the Sensor so that it is parallel to your vehicle's bumper.
4. Insert one end of the included Connector Cable into the Light Display's CABLE JACK and the other end into the Sensor's CABLE JACK.
5. If using the AC Adapter, insert one end into the AC ADAPTER JACK and the other end into an electrical outlet.  
Note: follow 4&5 if product has AC ADAPTER included.
6. Press ON/OFF. The red, yellow and green LED indicators flash, indicating the unit has calibrated and the vehicle distance is recorded.

## PARK ZONE OPERATION

### POWERING THE UNIT

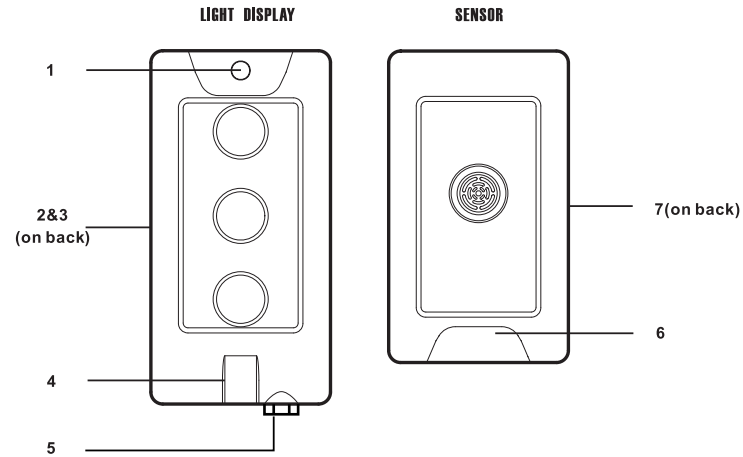
You can power the unit using the included AC Adapter, or with four AA batteries (not included).

### INSERTING THE BATTERIES

1. Remove the two BATTERY COMPARTMENT COVERS.
2. Insert two AA batteries (not included) into each compartment according to polarity indicators inside the compartment.
3. Replace the BATTERY COMPARTMENT COVERS.

## BATTERY PRECAUTIONS

- Dispose of the old batteries properly. Do not dispose of the old batteries in a fire.
- Do not leave the batteries where a child or pet could play with or swallow them. If the batteries are swallowed, contact a physician immediately.
- The batteries may explode if mistreated. Do not attempt to recharge or disassemble the batteries.
- Use only fresh batteries of the required size and type. Do not mix old and new batteries, different types of batteries, or rechargeable batteries of different capacities.



## LOCATION OF CONTROLS

### LIGHT DISPLAY

1. ON/OFF
2. BATTERY COMPARTMENT COVERS
3. MOUNTING HOLES
4. CABLE JACK
5. AC APAPTER JACK

### ACCESSORIES

- Connector Cable
- Screws

### SENSOR

6. CABLE JACK
7. MOUNTING HOLES