

SPECIFICATIONS :

Range : 5 - 99 PSI

Accuracy : + / - 1% + 0.1 PSI

Resolution : 0.1 PSI

Power : 2 x CR2032 Lithium Battery (Replaceable)

MEASURING TIRE PRESSURE :

Measuring Tire Pressure without PRESET GOAL

1. Press "On/Prog" button to activate all digits until "0.0" appears (Default unit of measure is PSI).



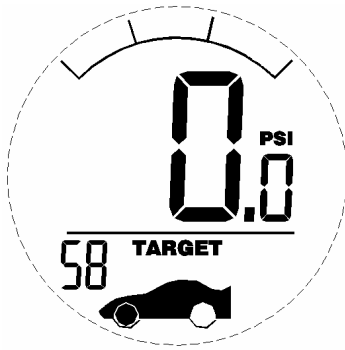
2. Push Nozzle of gauge on to tire valve. Make sure a good seal is made between the nozzle and the valve stem so that no hissing sound of escaping air is heard.
3. Hold Gauge on valve stem until you hear a "beep" when the pressure reading is displayed and locked.



4. After the reading has locked on the display. Remove the tire gauge from the valve stem. The Pressure reading stays on the display for 10 seconds.

How to set GOAL

1. Press "On/Prog" button to activate all digits until "0.0" appears (Default unit of measure is PSI).
2. Press and Hold "On/Prog" button for 3 seconds to enter setting mode. The unit "PSI" or "BAR" appears and blinks. Press Up / Down button ("<" and ">") to switch between PSI and BAR. Then press "On/Prog" button to confirm.
3. Default front Tire or rear tire lights up and blinks. Press Up/ Down button ("<" and ">") to switch between front and rear tire. Press "On/Prog" button to confirm.
4. Pressure Up/Down button ("<" and ">") to change target number and press "On/Prog" button to confirm.



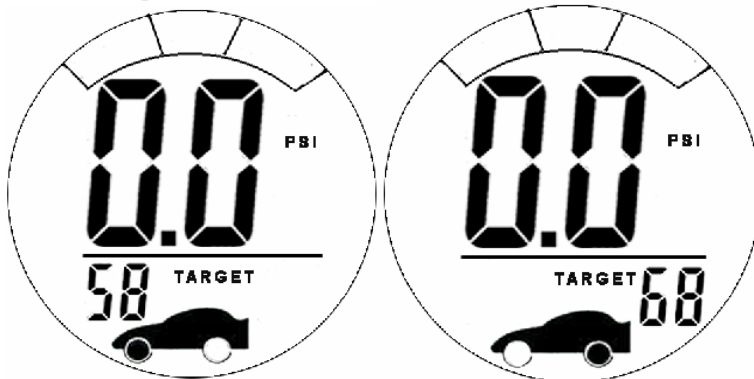
5. The second tire lights up. Press Up /Down button (" $<$ " and " $>$ ") to change the target number and press "On/Prog" button to confirm.
6. Unit of Measurement and target numbers for both tires light up and stay for about 2 seconds.
7. The Pressure gauge has been programmed and the display will go back to "0.0".

Measuring Tire Pressure with PRESET GOAL

1. Press "On/Prog" button to activate all digits until "0.0" appears (Default unit of measure is PSI).



2. Press Up / Down button (" $<$ " and " $>$ ") to choose between front and rear tires.



3. Push Nozzle of gauge on to tire valve. Make sure a good seal is made between the nozzle and the valve stem so that no hissing sound of escaping air is heard.
4. Hold Gauge on valve stem until you hear a "beep" when the pressure reading is displayed and locked. Simultaneously, the "LOW", "OK" or "HIGH" signals will light up to indicate whether the actual pressure is lower, higher than the target or "ok" when comparing to the Preset Target Goal. (+/- 0.5 PSI or 0.05 BAR)



5. After the reading has locked on the display. Remove the tire gauge from the valve stem. The Pressure reading stays on the display for 10 seconds. At the end of this time period, the gauge will automatically go to "0.0". The unit is now ready for measure pressure again. If no additional readings are made, the unit will automatically turn off after another 10 second time-out period.

Operating White LED Flashlight

The White LED flashlight can be turned on by just pressing / holding the light button. The flashlight will be turned off once the light button be released

HELPFUL HINTS:

- Always be sure to follow the tire manufacturers recommended tire pressure ratings which are based on "cool" tire temperatures.
- To clean the gauge, use a soft damp cloth. Do not immerse in, or spray with water or other liquid cleaners.

REPLACING THE BATTERIES:

To replace the batteries, unscrew the battery cover and remove the old batteries. Observe carefully the correct polarity before installing the new batteries.
Replace the battery compartment cover and screw tightly.

What to do if:

- You do not get any reading at all (either blank display or all zeros)
 - a) See the instructions and follow them carefully.
 - b) If gauge still does not work, see Warranty and Service section.
- You observe an unusually high and low reading
 - a) Make sure a good seal is made between the nozzle and the valve stem so that no hissing sound of escaping air is heard.
 - b) Make sure you are checking the pressure on cool tires which have not been driven on for several hours.

Warranty and service

Measurement Ltd., Inc warrants this gauge against defects in material of workmanship for a period of five (5) years from the date of purchase and agrees to replace it free of charge. This warranty does not cover damage resulting from misuse or abuse of the product. Should your gauge require service, you may send it back to Measurement Ltd., Inc for repair or replacement.

Our authorized service center address:

2001 Route 46, Suite 310 Parsippany, NJ 07054
Attn: Customer Service